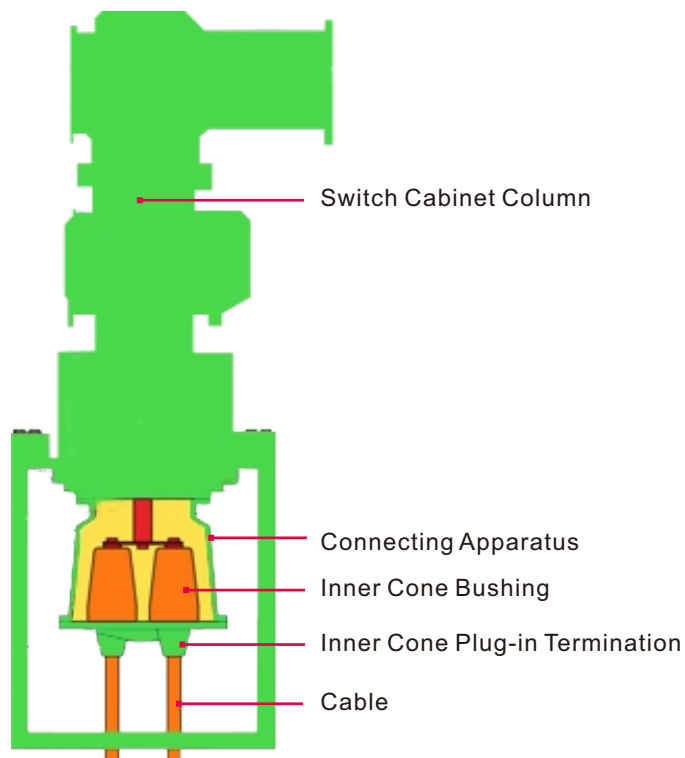
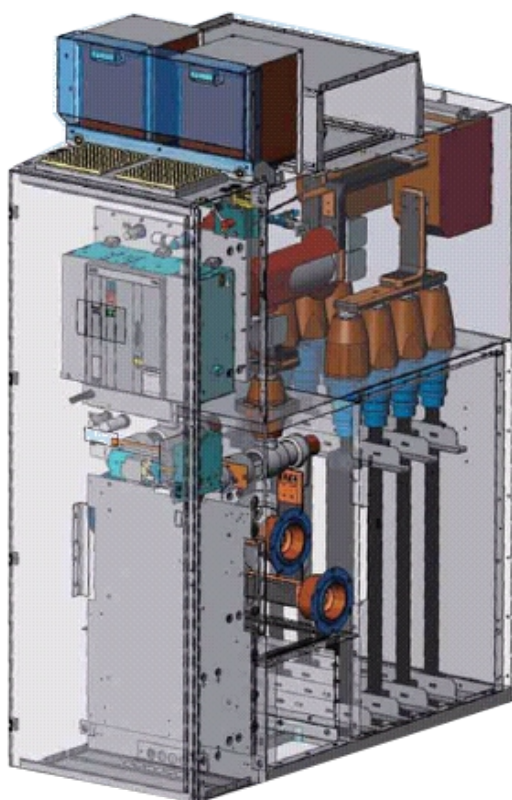


# Inner Cone Plug-in Serial up to 42kV

## Termination



- Conforming to EN 50181&50180
- Dry interface
- Premould stress control cone of silicone rubber with 100% factory tested
- Tested according to IEC 60502
- Metal protective shell on tail to provide great mechanical protection and fully shielding
- Adopting integral compression structure of tail tube and spring to ensure enough interface force between the stress control cone and bushing
- Suitable for indoor& outdoor condition mated with C-GIS or transformers

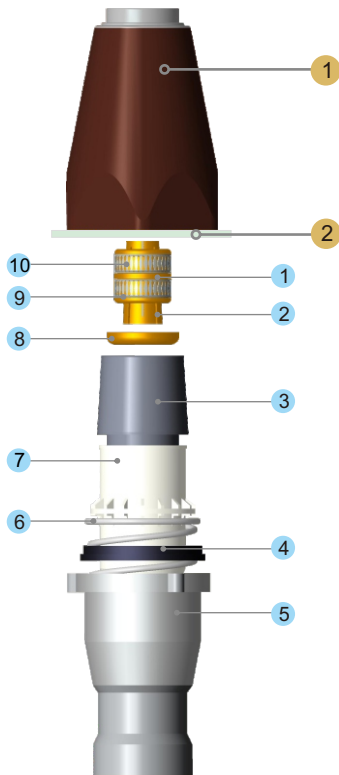


## Application

Inner Cone Plug-in  
Serial up to 42kV



## Designed Profile



### Insulated Bushing

- 1 Inner Cone Insulated Bushing
- 2 Flange

### Inner Cone Plug-in Termination

- 1 Wedge-shaped Cylinder
- 2 Bite-wire Tool
- 3 Premould Stress Cone
- 4 Gasket
- 5 Tail Tube
- 6 Non-magnetic Spring
- 7 Supporting Tube
- 8 Stopper Set
- 9 Clamp Ring
- 10 Conductive Strip

## Technical Data

Item		Main Body		
		1#	2#	3#
Rated Current	A	630	800	1250
Maximum System Voltage( $U_m$ )	kV	36	42	42
AC Withstand Voltage	50Hz for 5min (kV)	70	117	117
Partial Discharge	$1.73U_0$	$\leq 5pC$	$\leq 5pC$	$\leq 5pC$
Impulse Withstand Voltage (10 times for each polarity)	1.2/50 $\mu s$ (kV)	170	200	200
Installation	1sec(kA)	31.5	40	50

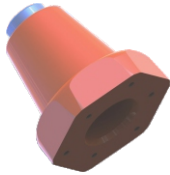
## Selection Table

Rated Voltage	Main Body	Core Number	Part No.
26/35kV	3#	3	35kV WCBN-3-3×50~500
		1	35kV WCBN-3-1×50~800
	2#	3	35kV WCBN-2-3×50~185
		1	35kV WCBN-2-1×50~185
27.5kV	3#	1	27.5kV WCBN-3-1×150~400
18/30kV	3#	3	30kV WCBN-3-3×35~500
		1	30kV WCBN-3-1×35~800
	2#	3	30kV WCBN-2-3×35~185
		1	30kV WCBN-2-1×35~185
12/20kV	3#	3	20kV WCBN-2-3×35~500
		1	20kV WCBN-3-1×35~800
	2#	3	20kV WCBN-2-3×35~185
		1	20kV WCBN-3-1×35~185
6/10, 8.7/10 or 8.7/15kV	3#	3	10kV WCBN-3-3×35~500
		1	10kV WCBN-3-1×35~800
	2#	3	10kV WCBN-2-3×35~185
		1	10kV WCBN-3-1×35~185

# Insulated Bushing

## Description

- Conforming to EN 50181&50180
- Connecting to high voltage conductor of C-GIS cabinets or transformers
- Compact design, fully insulated and no maintenance



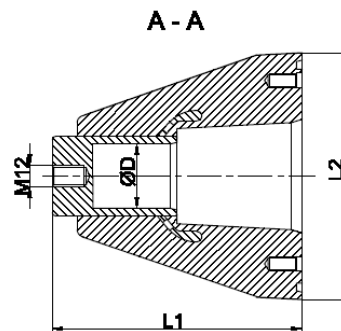
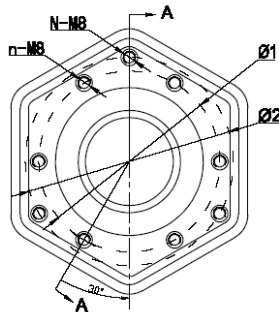
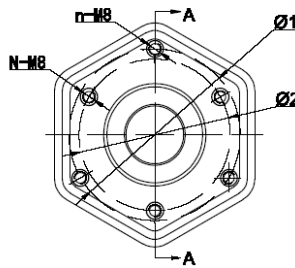
WNJT-1



WNJT-2



WNJT-3



Dimension: mm

## Referred Dimension

Item		Part No.		
		WNJT-1	WNJT-2	WNJT-3
Outline	L1(mm)	140	140	217
	L2(mm)	136	136	165
Conductor	ΦD(mm)	36	39	55
Installation	Installation Position Φ1 for Bushing (mm)	108	108	113
	Number of Installation Hole n(pcs)	3	3	6
	Installation Position Φ2 for Termination (mm)	95	102	130
	Number of Installation Hole N(pcs)	3	3	3

Inner Cone Plug-in  
Serial up to 42kV

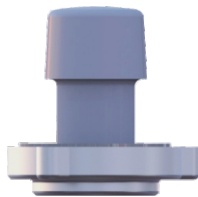
## Technical Data

Item		Part No.		
		WNJT-1	WNJT-2	WNJT-3
Rated Current	A	630	800	1250
Maximum System Voltage( $U_m$ )	kV	36	42	42
AC Withstand Voltage	50Hz for 5min (kV)	70	117	117
Partial Discharge	$1.73U_0$	$\leq 5\text{pC}$	$\leq 5\text{pC}$	$\leq 5\text{pC}$
Impulse Withstand Voltage (10 times for each polarity)	1.2/50 $\mu\text{s}$ (kV)	170	200	200
Maximum Short-time Current Withstand	1sec(kA)	31.5	40	50
Rated Impulse Current	kA	125	150	150

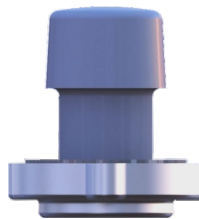
# Insulated Insert

## Description

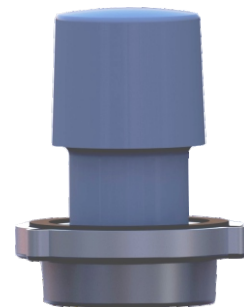
- Conforming to EN 50181 & 50180
- To seal and insulate inner cone insulated bushing used for spare outlet port



WMT-1



WMT-2



WMT-3

## Technical Data

Item		Part No.		
		WMT-1	WMT-2	WMT-3
Maximum System Voltage( $U_m$ )	kV	36	42	42
AC Withstand Voltage	50Hz for 5min(kV)	70	117	117
Partial Discharge	$1.73U_0$	$\leq 5\text{pC}$	$\leq 5\text{pC}$	$\leq 5\text{pC}$
Impulse Withstand Voltage (10 times for each polarity)	1.2/50 $\mu\text{s}$ (kV)	170	200	200

Inner Cone Plug-in  
Serial up to 42kV

