

# GT-G Series Copper Connector (without barrier)



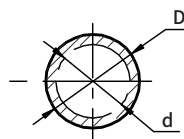
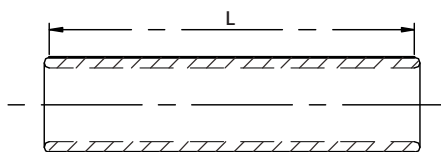
## Description:

WOER copper connector is applicable to connection between electrical cables in power distribution, specifically applied in heat shrink and cold shrink joint kit.

## Material:

Made of quality T2 Cu tube, of which Cu content  $\geq 99.9\%$ . It demonstrates excellent conductivity. Its electrical conductivity reaches 97% IACS at least. Our copper material conforms to national standard: GB/T5231-2001.

## Specification



Product Model	Dimension		
	OD (D)	ID (d)	Length (L)
GT-G-10	8	5.0	50
GT-G-16	9	6.0	56
GT-G-25	10	7.0	60
GT-G-35	12	8.0	64
GT-G-50	14	10.0	72
GT-G-70	16	12.0	78
GT-G-95	18	13.0	85
GT-G-120	20	15.0	90
GT-G-150	22	16.0	94
GT-G-185	25	18.0	100
GT-G-240	27	20.0	110
GT-G-300	31	24.0	120
GT-G-400	34	26.0	135
GT-G-500	38	30.0	150
GT-G-630	45	35.0	170

Remark: the critical dimension tolerance is executed according to GB/T14315-2008.