

Cross Bonding Link Box

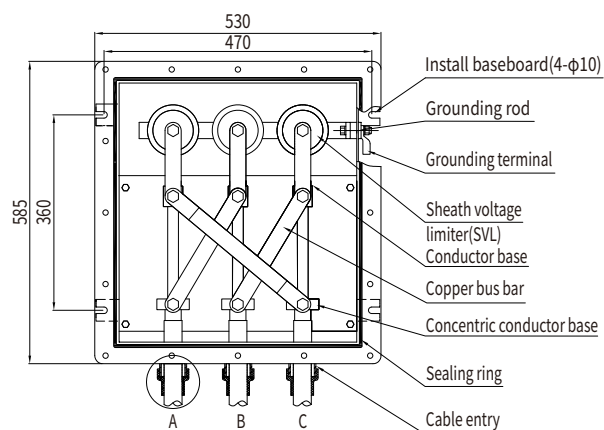
Product Introduction

Cross bonding link box is used for cross interconnection of high-voltage single-core cable metal sheath, limiting over voltage applied to cable sheath and both insulated part ends of shield-break joint, controlling induced voltage on metal sheath, reducing or eliminating ring current on cable sheath, increasing transmission capacity of power cable, avoiding overshath breakdown, to ensure a safe operating for per cable. With stainless steel enclosure, link box could be filled by resin inside, at the mean time, link box is volume-small, weight-light, installation-easy and SVL removable.

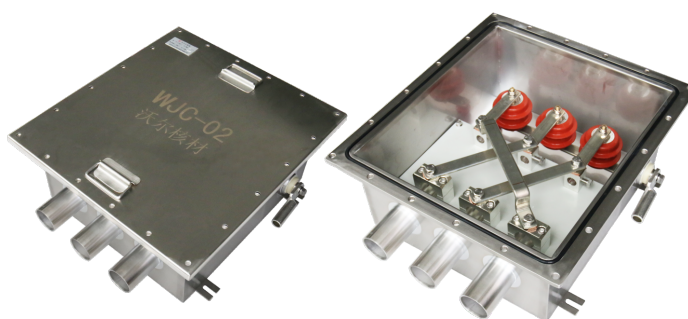
Type/Applications:

Cross Bonding Link Box: WJC

Structure Diagram



Box height:230mm



Cross Bonding Link Box

Main Electrical Properties of Link Boxes

Test Item	Technical Requirements
DC voltage withstand test	Neither breakdown nor flashover shall occur at 20kV for 1 min
Impulse voltage test	Neither breakdown nor flashover shall occur at 10 positive and 10 negative impulse of 40kV (peak value)
Insulation resistance test between copper bar and housing	Not less than 20MΩ
Contact resistance test of copper bar	No more than 20μΩ

Main Electrical Properties of SVL

Test Item	BHQ-7/600	BHQ-10/600
DC 1mA reference voltage	4kV	5.8kV
Rectangular wave capacity	600A	600A
Residual voltage ratio	$K \leq 2$	$K \leq 2$
Current capacity	100kA	100kA
Rated voltage	2.8kV	4kV
Residual voltage of nominal discharge	$\leq 7kV$	$\leq 10kV$